

PROJECT TITLE

**LINCOLN
EQUITIES -
NY-131- BLDG A****NY-312 & PUGSLEY RD,
SOUTHEAST, NY 10509**

ARCHITECT

ADBI / DESIGN SERVICES LLC
44 SOUTH BROADWAY, SUITE 1003
WHITE PLAINS, NY 10601

CIVIL ENGINEER

LANGAN ENGINEERING
300 KIMBALL DRIVE
PARSIPPANY, NJ 07054

STRUCTURAL ENGINEER

SMITH/ROBERTS AND ASSOCIATES, INC.
6501 BLUFF RD.
INDIANAPOLIS, INDIANA 46217

MECHANICAL ENGINEER

NATIONAL DESIGN/BUILD SERVICES
11840 BORMAN DRIVE
ST. LOUIS, MO 63146

ELECTRICAL ENGINEER

FXB ENGINEERING
5 CHRISTY DRIVE, SUITE 307
CHADDS FORD, PA 19317

PLUMBING ENGINEER

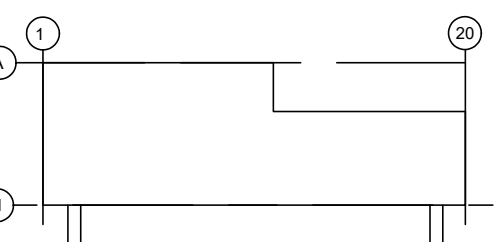
MCCARTHY ENGINEERING ASSOCIATES,
INC.
315 EAST SECOND STREET
BOYERTOWN, PA 19512

FIRE PROTECTION ENGINEER

S A COMUNALE CO. INC.
2900 NEWPARK DRIVE
BARBERTON, OH 44203

SEAL

KEY PLAN



SUBMITTALS

NO.	DATE	DESCRIPTION
A	05.27.22	ISSUE FOR REVIEW
0	06.10.22	ISSUE FOR PERMIT

PROJECT NO.

AS286-21 | NY131

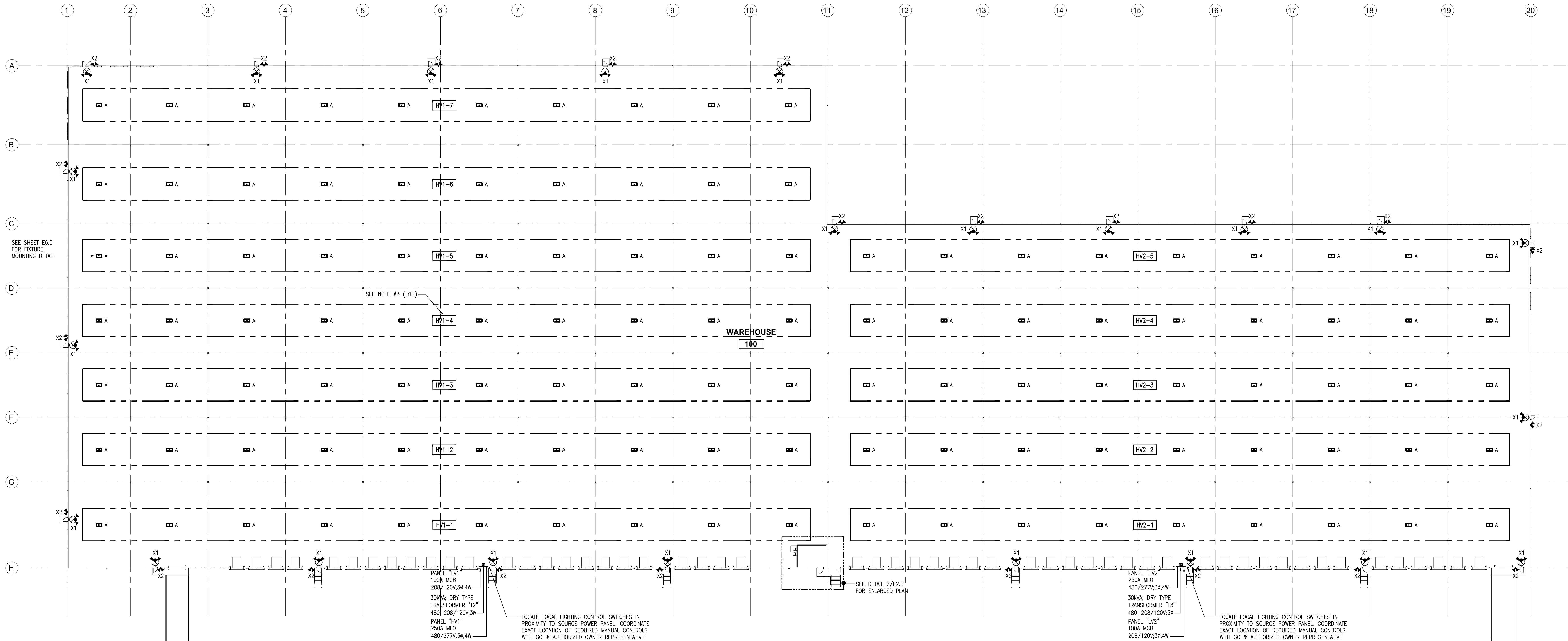
DRAWN BY

FXB

SHEET TITLE

**WAREHOUSE
LIGHTING PLANS**

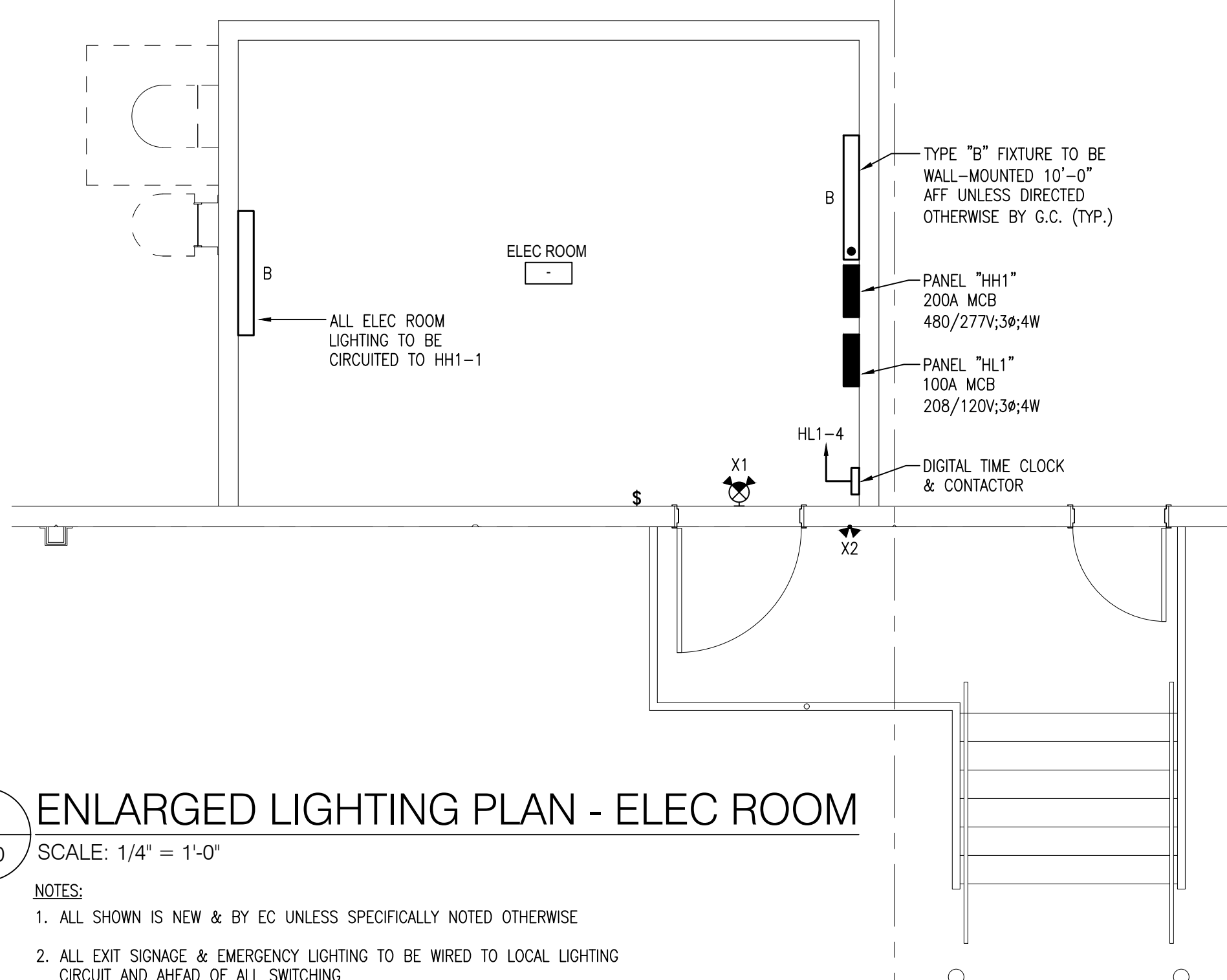
SHEET NO.

E2.0**1 WAREHOUSE LIGHTING PLAN**

SCALE: 1" = 30'-0"

NOTES:

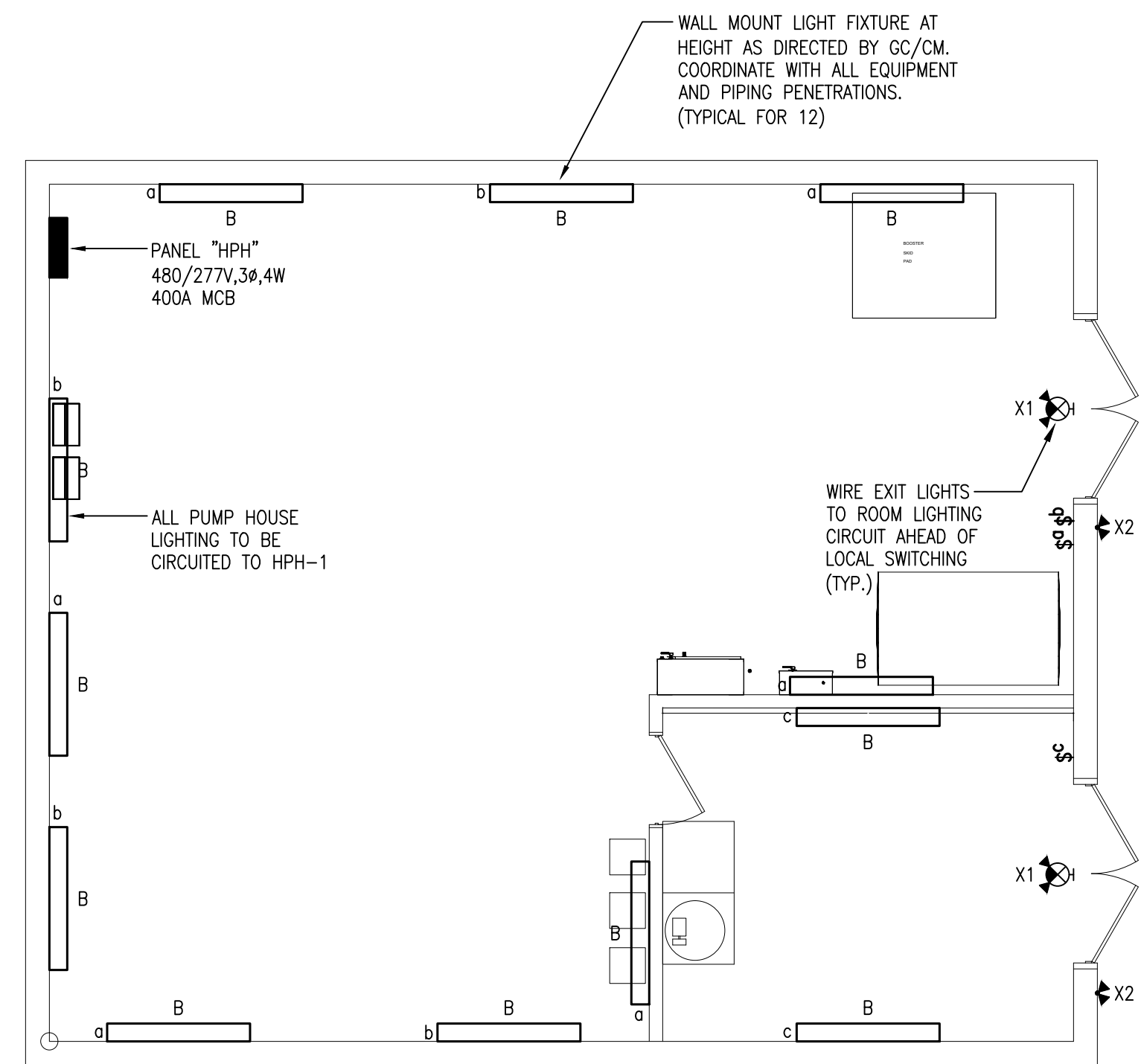
- ALL SHOWN IS NEW & BY EC UNLESS SPECIFICALLY NOTED OTHERWISE
- ALL EXIT SIGNAGE & EMERGENCY LIGHTING TO BE WIRED TO LOCAL LIGHTING CIRCUIT AND AHEAD OF ALL SWITCHING
- ALL LIGHTING FIXTURES WITHIN THE SPECIFIED AREA SHALL BE CIRCUITED TO THE CIRCUIT NUMBER(S) INDICATED ON THIS PLAN, UNLESS NOTED OTHERWISE. SEE PANEL SCHEDULES ON DRAWING E5.0 FOR ADDITIONAL INFORMATION.

**2 ENLARGED LIGHTING PLAN - ELEC ROOM**

SCALE: 1/4" = 1'-0"

NOTES:

- ALL SHOWN IS NEW & BY EC UNLESS SPECIFICALLY NOTED OTHERWISE
- ALL EXIT SIGNAGE & EMERGENCY LIGHTING TO BE WIRED TO LOCAL LIGHTING CIRCUIT AND AHEAD OF ALL SWITCHING

**3 ENLARGED LIGHTING PLAN - PUMP HOUSE**

SCALE: 1/4" = 1'-0"

NOTES:

- ALL SHOWN IS NEW & BY EC UNLESS SPECIFICALLY NOTED OTHERWISE
- ALL EXIT SIGNAGE & EMERGENCY LIGHTING TO BE WIRED TO LOCAL LIGHTING CIRCUIT AND AHEAD OF ALL SWITCHING